

PART OF SECTION 32, T.7N., R.1W., S.L.B. & M.
PATRIOT POINT SUBDIVISION PHASE A

IN NORTH OGDEN CITY

SCALE 1" = 200'

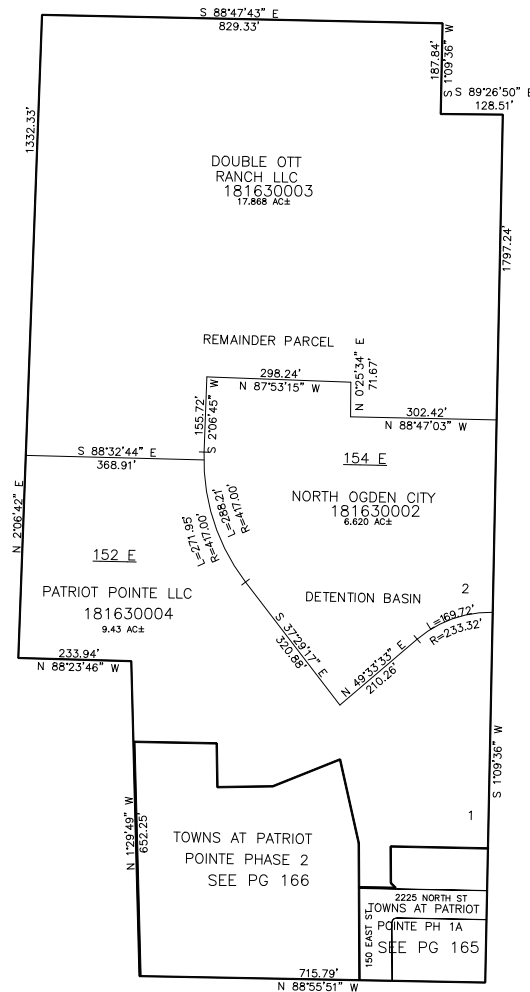
TAXING UNIT: 433

SEE PAGE 56

2550 NORTH STREET

SEE PAGE 52

SEE PAGE 56



10' UTILITY & DRAINAGE EASEMENTS EACH
SIDE OF PROPERTY LINES AS INDICATED
BY DASHED LINES EXCEPT AS OTHERWISE
SHOWN.

FOR COMPLETE ENG DATA SEE
ORIGINAL DEDICATION PLAT IN
BOOK 87, PAGE 63, & 64 OF RECORDS.

SEE PAGE 56